



LINKnet

Information and control system

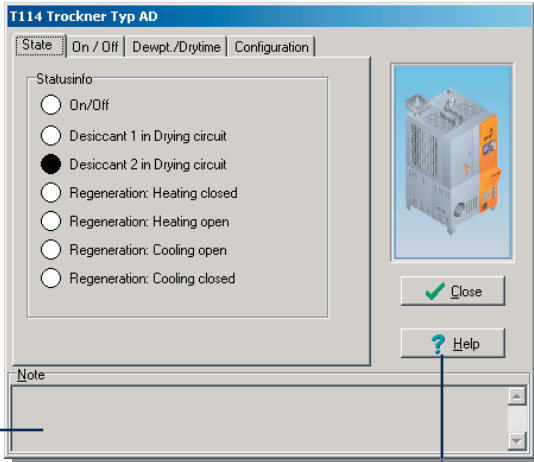
LINKnet, the Windows™ based graphic user interface for easy management of your Motan system. LINKnet simplifies the control of the following complex tasks:

- Operating
- Supervising
- Reporting
- Archiving





OPERATING

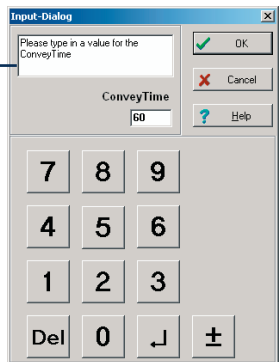


Online-Help

Context-sensitive, target-oriented help. Information on all system units.

Notepad

A notepad facility is available with each system unit where messages can be left.



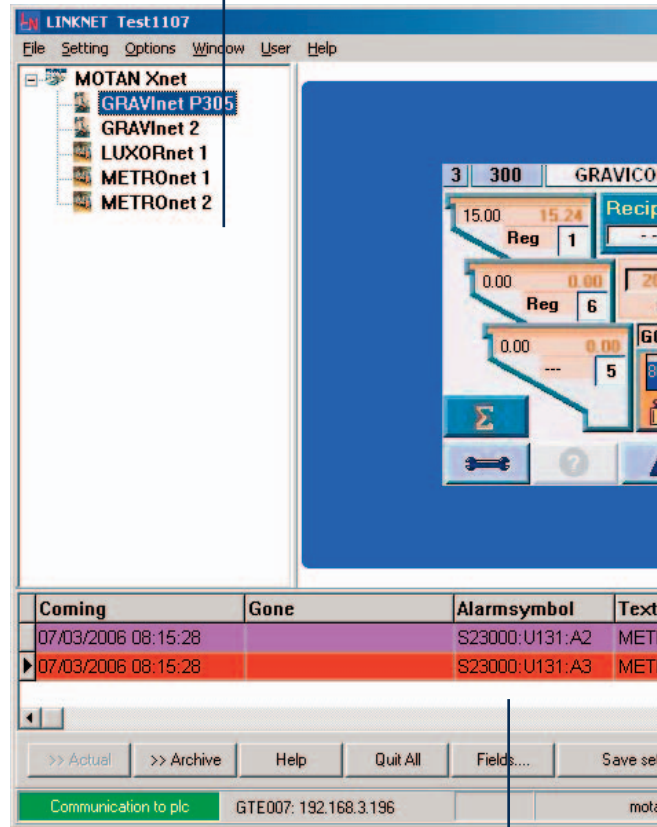
Safety

All set values are automatically checked for correct range; if wrong, a warning is given.

SUPERVISING

Unit manager

The configuration of the system can be changed, and text can be customised.



Alarm manager

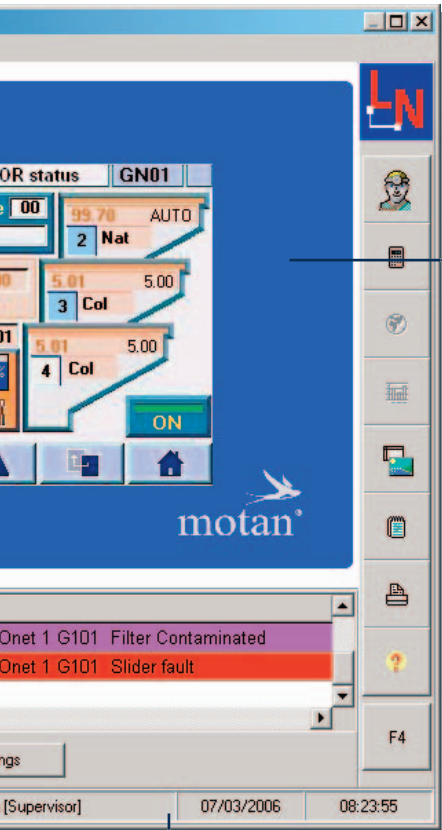
Management and viewing of the actual and archived alarms.

LINKnet

REPORTING

Reporting

All actual and archived alarms can be printed.



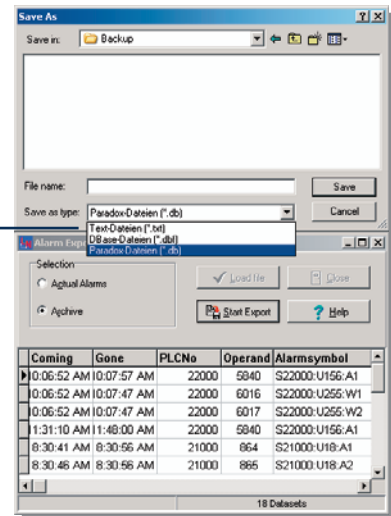
User levels

There are three different user levels which are password-protected.

ARCHIVING

The screenshot shows an 'Alarm Printout - Archived Alarms' window. The table contains the following data:

Date	Time	Symbol	Designation	AK	ID
2/16/2005	10:06:52 AM	S22000U156A1	LUDRnet 1 G009 Blower Trouble	1	5940
2/16/2005	10:06:52 AM	S22000U255W1	LUDRnet 1 WALN Week maintenance to perform	3	6016
2/16/2005	10:06:52 AM	S22000U255W2	LUDRnet 1 WALN Year maintenance to perform	3	6017
2/16/2005	11:31:10 AM	S22000U156A1	LUDRnet 1 G009 Blower Trouble	1	5940
2/22/2005	8:30:41 AM	S21000U18A1	GRAVnet 1 G001 Blower Trouble	1	864
2/22/2005	8:30:46 AM	S21000U18A2	GRAVnet 1 G001 Filter Contaminated	2	865
2/22/2005	8:21:41 AM	S21000U18A1	GRAVnet 1 G001 Blower Trouble	1	864
2/22/2005	8:21:46 AM	S21000U18A2	GRAVnet 1 G001 Filter Contaminated	2	865
2/22/2005	8:40:38 AM	S21000U10A3	GRAVnet 1 E001 Dooropen	1	594
2/22/2005	8:42:17 AM	S21000U10A3	GRAVnet 1 E001 Dooropen	1	594
2/22/2005	8:42:31 AM	S21000U10A3	GRAVnet 1 E001 Dooropen	1	594
2/22/2005	8:42:44 AM	S21000U10A3	GRAVnet 1 E001 Dooropen	1	594
2/22/2005	10:06:56 AM	S21000U10A3	GRAVnet 1 E001 Dooropen	1	594
2/22/2005	10:07:25 AM	S21000U10A3	GRAVnet 1 E001 Dooropen	1	594
2/22/2005	4:41:15 PM	S21000U10A3	GRAVnet 1 E001 Dooropen	1	594
2/22/2005	4:42:19 PM	S21000U18A1	GRAVnet 1 G001 Blower Trouble	1	864
2/22/2005	4:42:24 PM	S21000U18A2	GRAVnet 1 G001 Filter Contaminated	2	865
2/22/2005	4:42:52 PM	S21000U18A1	GRAVnet 1 G001 Blower Trouble	1	864



Archiving

Alarms can be archived in different formats for use in other programs, e.g. Excel.

System management

Overview of all main unit parameters.



Hardware

Office version

Desktop PC with

- 17" monitor
- Min. 800 x 600 pixel
- TCO 99 approved low emission monitor
- Intel Processor
128 MB RAM
min. 32 MB graphics
HD > 30 GB
FD 3.5", CD
mouse, keyboard

Options

- 17" flat screen
- 21" monitor
- Printer (non-industrial)

Software

- Connection to one PLC
- Extensions available upon customer request

Options

- Graphic system view
- Remote maintenance
- Uninterrupted power supply

Industrial version

Industrial PC with

- IP 65 rated
- 12.1"-TFT display
- 800 x 600 pixel
- Intel Processor
128 MB RAM
min. 32 MB graphics
HD > 25 GB
FD 3.5", CD
- Touch sensitive screen

Options

- Printer (non-industrial)
- Compact keyboard with trackball
- 19" steel cabinet

LINKnet

Special features

- Can operate any number of system units
- User friendly graphic interface
- Overview of all important parameters
- Three different user levels
- Prints a list of actual and archived alarms
- Graphic view of system – to aid recognition; it is possible to graphically represent each part of the system in the tree view (optional)

Your benefits

- System can easily be reconfigured to accommodate changes in production
- Data can be exported for use in other applications
- High level of system security through credibility testing of data and warning functions
- Secure investment as the Windows based system can be easily expanded
- Easy to use

Subject to technical changes.

Motan Pte. Ltd.
China/Beijing
Tel +86 10 6525-8815/16/17
Fax +86 10 6522-2522
motanbj@motan.com.cn

Motan GmbH/South
Germany
Tel +49 7562 76-0
Fax +49 7562 76-111
motan.ger.s@motan.de

Motan Pte. Ltd.
Singapore
Tel +65 6873-7666
Fax +65 6873-7555
motansin@motan.com.sg

SEMMIL*
Brazil
Tel +55 11 5522-2200
Fax +55 11 5687-5012
vendas@semmil.com.br

Motan Pte. Ltd.
China/Shanghai
Tel +86 21 6351-2999
Fax +86 21 6351-3555
motansh@motan.com.cn

Motan Ltd.
Great Britain
Tel +44 1235 5500-11
Fax +44 1235 5500-33
sales@motan.co.uk

Motan AG
Switzerland
Tel +41 41 74861-11
Fax +41 41 74861-10
info@motan.ch

Larsen & Toubro Limited*
India
Tel +91 44 2249-1932
Fax +91 44 2249-2471
krishramani@ltnindia.com

Motan SAS
France
Tel +33 1 60 8690-18
Fax +33 1 60 8690-29
info@motan.fr

Motan India Liaison Office
India
Tel +91 44 2445-3779
Fax +91 44 2440-4196
motan.india@motan.com

Motan Pte. Ltd.
Thailand
Tel +66 2 717-1088
Fax +66 2 717-1080
motanth@motan.co.th

Sangyokiden Co. Ltd.*
Japan
Tel +81 82 928-6150
Fax +81 82 928-9954
info@sangyokiden.co.jp

Motan GmbH/North
Germany
Tel +49 5223 68544-0
Fax +49 5223 68544-11
motan.ger.n@motan.de

Motan S.r.l.
Italy
Tel +39 02 9272121
Fax +39 02 92148392
motan.it@motan.com

Motan Inc.
USA/Plainwell
Tel +1 269 685-1050
Fax +1 269 685-1059
motanusa@motan-inc.com

over 90 agencies worldwide

* partners



03_06_0.5



www.motan.com