

# GF Series

## Film Scrap Grinder & Accessories



*The GF Series: film scrap grinder for use with **ASR**® systems to recycle edge trim, roll scrap, and loose scrap. (Pictured above is a GFCN30 with optional roll feeder, hydraulic lift, and AEN air eliminator)*

The GF Series grinders from Process Control Corporation are used as part of an **ASR**® Automatic Scrap Recycling system for in-line recycling of production film scrap. GF Series grinders are designed to provide efficient, uniform grinding of film scrap. There are four cutting chamber sizes available along with different horsepower motors to accurately match the grinder to the required scrap rate. The GF Series grinders are available in configurations that accept edge and bleed trims, roll scrap, and loose scrap.

Standard carbide-coated knives are

employed in the system, increasing the time between sharpening. The rotor knives approach the stationary bed knife, or knives, at a steep angle to ensure a clean scissors-cut. This technique is used for maximum bulk-density and flow of ground scrap. The open rotor design improves airflow for cooling, permitting the highest possible throughput.

After the cutting chamber, material passes through a sizing screen that is chosen specifically for the application and material. The ground scrap is pulled through the grinder screen

and carried through the process by the scrap conveying fan standard on each GF Series grinder.

Reintroduction of roll scrap is achieved with the attachment of an optional RN Series roll feeder. The roll feeder has knurled rolls that provide a strong pull on the film, without wrapping. They are available in several sizes with variable speed DC motors that run at 3 - 32 fpm (1 - 10 m/min).

The control panel for the grinders includes a motor starter for the grinder. When purchased as part of a complete **ASR**® system, the control panel includes controls for the inducers and roll feeder, as well. ■

### Standard Features

- ODP motor with 4-sided belt guard (TEFC motor on GFB)
- Open rotor cutting chamber with outboard bearings
- 2 HP scrap conveying fan (5 HP on GFD)
- Mild steel construction
- Carbide-coated knives
- Remote-mount control panel
- Electricals: Power requirements 460V/3PH/60Hz

### Options

- Special paint
- Special electricals
- Hydraulic lift for opening cutting chamber (not available on GFA or GFB, standard on GFD)
- Sound enclosure
- AEN air eliminator separates conveying air from edge trims
- RF Series roll feeder



The GF Series cutting chamber: Specifically designed for thin gauge film

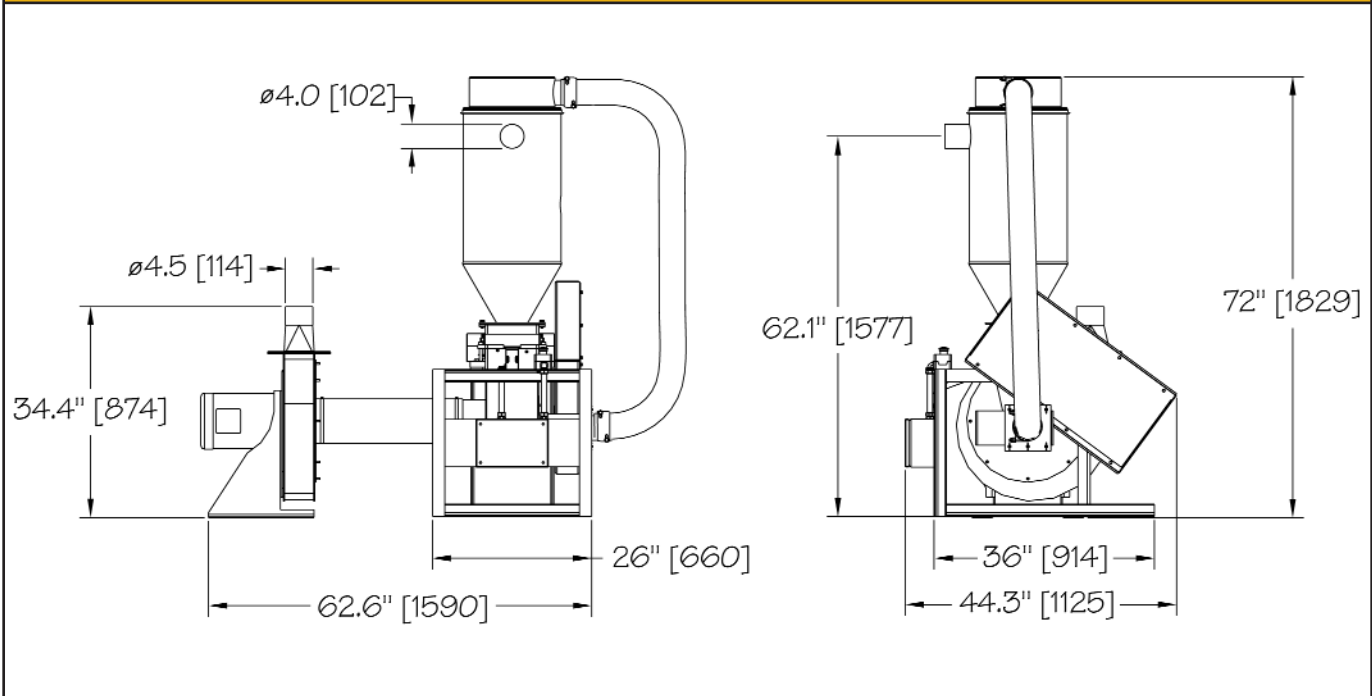


The GFA Film Scrap Grinder with air bypass



The GFA Film Scrap Grinder

## GFA Series Film Scrap Grinder with Air Bypass



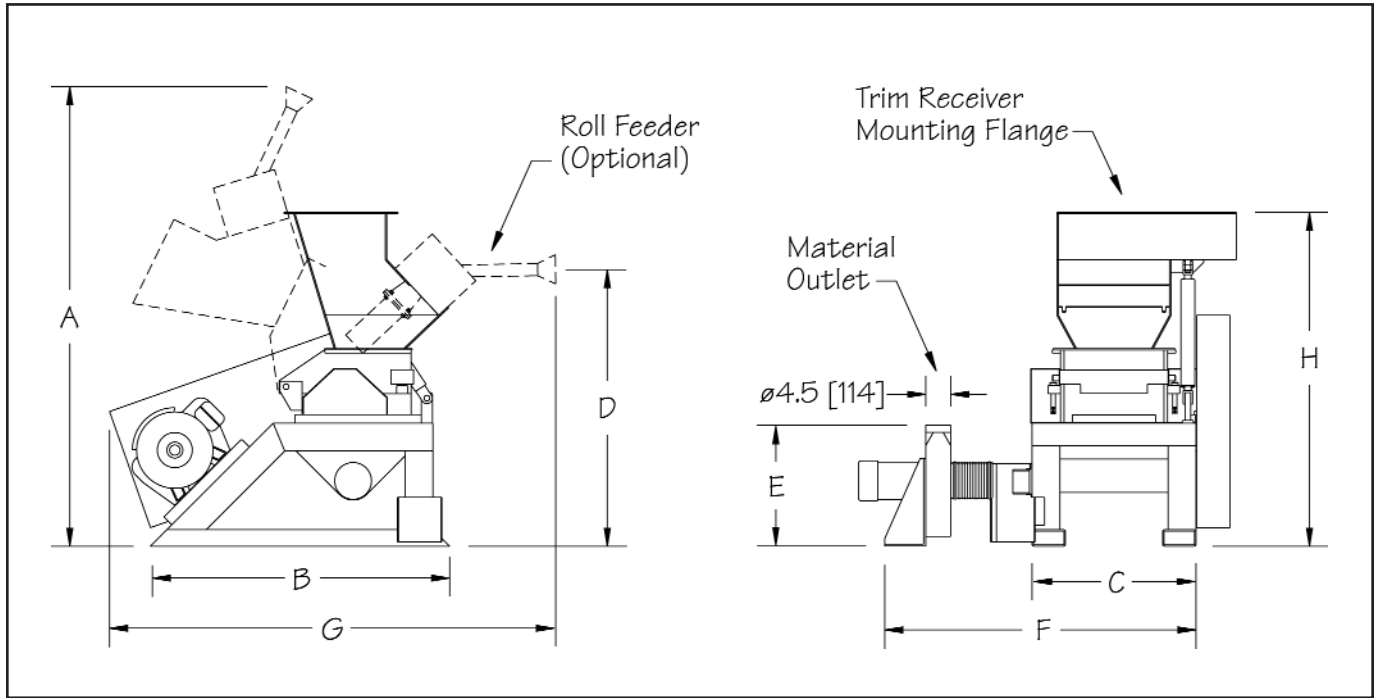
There are (2) different version of the GFA Series grinder. The GFA with Air Bypass is designed to handle edge and/or bleed trims only. This design utilizes a 5 HP fluff conveying fan for both inducing the trims into the grinder cutting chamber and for blowing the ground fluff

out of the grinder. There is no need for a separate trim removal inducer or air eliminator. The second version (see facing page for specifications) is for handling both trims and off-spec roll scrap. This design does require a separate inducer, air eliminator and roll feeder and uti-

lizes a 2 HP fluff conveying fan to blow the ground scrap. Both versions are designed with a single stationary knife and (2) rotating knives. The standard knives are carbide coated to promote long life.

SPECIFICATIONS for GFA SERIES FILM SCRAP GRINDER WITH AIR BYPASS					
Model Number	Motor HP (kW)	Rotating Knives	Stationary Knives	Rotor Length x Diameter - in (mm)	Shipping Weight lbs (kg)
<b>GFAN05</b>	5 (4)	2	1	7.5 x 6.2 (191 x 157)	950 (432)

# GF Series Film Scrap Grinders



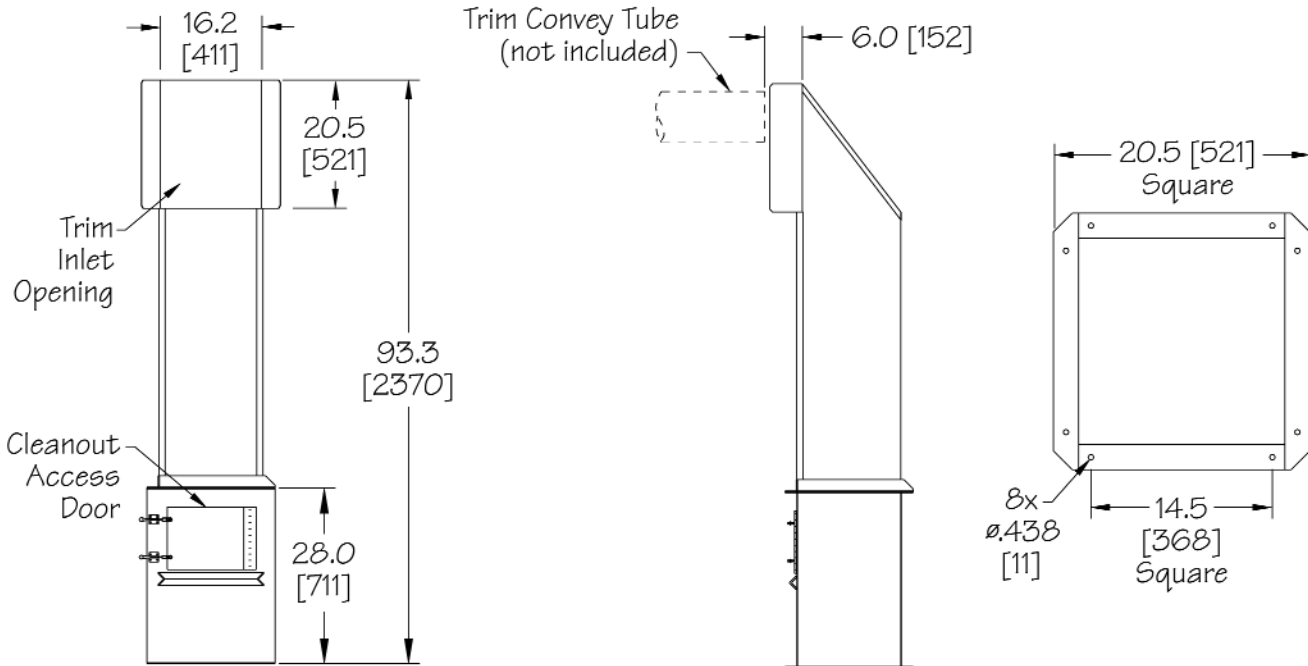
## SPECIFICATIONS for GF SERIES FILM SCRAP GRINDER

Model Number	Motor HP (kW)	Dimensions								Shipping Weight lbs (kg)
		A	B	C	D	E	F	G	H	
<b>GFAN05</b>	5 (4)	69.5 (1765)	36.0 (914)	26.0 (660)	56.9 (1445)	24.0 (610)	57.2 (1453)	49.4 (1255)	64.2 (1631)	950 (432)
<b>GFBN20</b>	20 (15)	82.0 (2083)	45.0 (1143)	26.3 (668)	47.1 (1196)		47.3 (1201)	69.7 (1770)	58.8 (1494)	2500 (1136)
<b>GFCN30</b>	30 (22)	86.1 (2187)	53.9 (1369)	29.5 (749)	55.6 (1412)		57.9 (1471)	81.2 (2062)	62.5 (1588)	2600 (1182)
<b>GFCN40</b>	40 (30)									2655 (1207)
<b>GFDN50</b>	50 (37)	103.6 (2631)	66.5 (1689)	41.5 (1054)	67.0 (1701)	34.7 (881)	80.1 (2035)	95.3 (2421)	73.8 (1875)	4025 (1830)
<b>GFDN60</b>	60 (45)									4190 (1905)
<b>GFDN75</b>	75 (56)									4190 (1905)
<b>GFDN100</b>	100 (75)									99.4 (2525)

## CUTTING CHAMBER SPECIFICATIONS

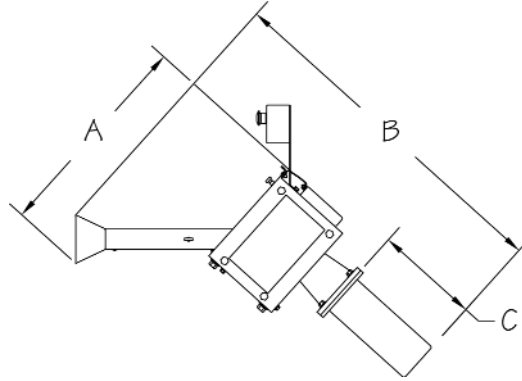
Model	Rotating Knives	Stationary Knives	Rotor Length x Diameter - in (mm)
<b>GFA</b>	2	1	7.5 x 6.2 (191 x 157)
<b>GFA</b>	3	1	11.5 x 9.5 (292 x 241)
<b>GFA</b>	3	1	17.5 x 13.2 (445 x 336)
<b>GFA</b>	3	2	26.5 x 16.0 (637 x 406)

# GF Series Accessories



## SPECIFICATIONS for AEN AIR ELIMINATOR

Model Number	Maximum Number Of Inducers	Shipping Weight - lbs (kg)
AEN	Two IN415 15hp	75 (35)



## SPECIFICATIONS for RFN SERIES ROLL FEEDER

Model Number	Grinder Model	Inlet Size	A in (mm)	B in (mm)	C in (mm)	Shipping Weight lbs (kg)
RFN13	GFA	4.25 x 2.5 (108 x 64)	13.7 (348)	25.7 (653)	10.6 (269)	175 (80)
RFN14	GFB	9.0 x 2.5 (229 x 64)	23.0 (584)	35.2 (894)		200 (91)
RFN15	GFC, GFD	11.0 x 2.0 (279 x 51)		38.2 (970)	11.3 (287)	225 (102)
RFN16	GFD	14.0 x 2.0 (356 x 51)	24.2 (615)	41.4 (1052)	14.6 (371)	250 (114)



**PROCESS CONTROL Corporation**  
**World Headquarters**  
 6875 Mimms Drive, Atlanta, GA 30340 USA  
 Tel: (770) 449-8810 Fax: (770) 449-5445  
 www.process-control.com

**PROCESS CONTROL GmbH**  
 Industriestrasse 15, 63633 Birstein, Deutschland  
 Tel: (+49) 0 60 54-91 29 0 Fax: (+49) 0 60 54-91 29 99  
 E-Mail: ProcessControl@t-online.de